

March Programs

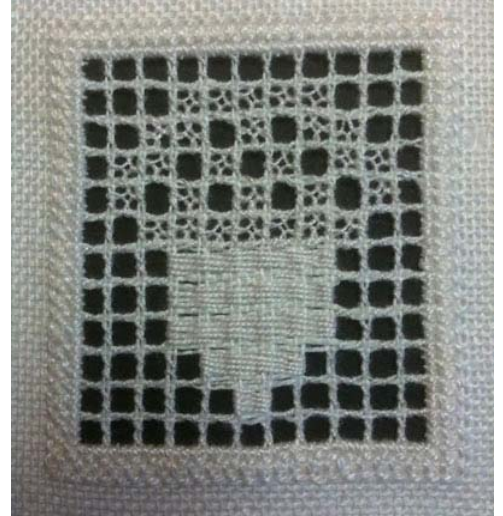
Georgetown and Sampler Satellites

Best Dressed Acorn – Winter
Barbara Staub

Our March program will be the first in a series titled Best Dressed Acorn – Winter. You will need to pre stitch the outer border (see directions below) in order to work on the filet in class. The design is small—2" x 2-1/4"—so this should be easily accomplished before the meeting.

You will need a piece of 25/26 ct. white linen measuring 5" x 6". The six inch sides are the top and bottom. All stitching is done with white #12 perle cotton.

To begin stitching, come down 1-3/8" from the top and 2" from the left side of the fabric. That point is the top left corner.

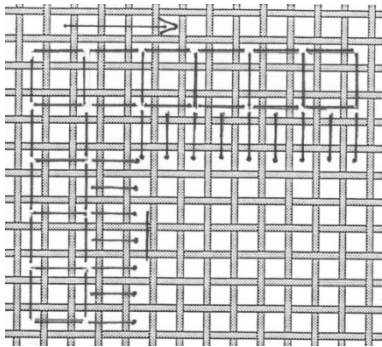


You will be stitching a square. (See two graphs below). The center band is done in the four-sided stitch - 25 squares across and 27 squares down. Start from the left and work to the right (clockwise). Do not pull your stitches tight as you will have trouble doing the satin stitches beneath. Below the four-sided stitch you will work a satin or flat stitch all the way around. Both of these stitches are easily done in hand. To prevent so much starting and stopping, cut your perle cotton into 36" lengths.

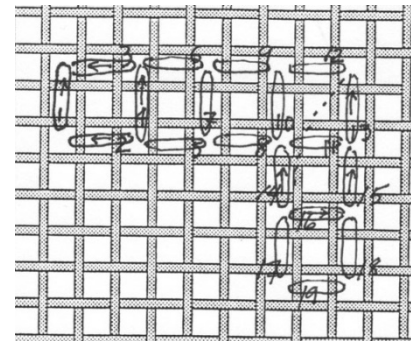
Barb Staub will teach us to cut the threads and work the filet design in class.

There is no charge for the class.

If you have any questions about this project, e-mail Barb at bksaustx@sbcglobal.net or call her at 238-7503.



Border chart: Outer squares are 4-sided stitch; inside row is satin stitches (come up at dot and go down next to 4-sided stitches).



4-sided stitch Detail